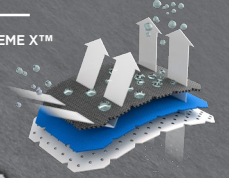


NEW MPC TECHNOLOGY!

MPC EXTREME X™
3 LAYER.



The Swedish Outdoor Brand.

SPRING & SUMMER 2025.



Tenson®

EST. 1951

CORPORATE
COLLECTION.




Tenson[®]
EST. 1951

OUTDOOR ADVENTURES. PAST. PRESENT. FUTURE.

The Tenson brand history is a never-ending voyage of outdoor adventures.

IN 1951 IN THE LITTLE coastal town of Varberg, Sweden, the aspiring entrepreneur and our founding father Paul Rydholm starts a small-scale production of sportswear together with his sister and two seamstresses.

Throughout the years, Tenson products were always tested in the most demanding conditions, keeping the adventurous dry in extreme and wet conditions, including those hearty souls attempting Arctic and Antarctic expedition firsts.

Today the DNA of Tenson remains the interplay between design, materials and technology - where function and style meet. The history of The Swedish Outdoor Brand is a never-ending voyage of outdoor adventures...



Outdoor Collection Men & Women.	4-61
Lifestyle Collection Men & Women.	62-73
Ski Collection Men & Women.	74-83
Technologies & Size Guide.	84-85
Overviews.	86-97

YOU CAN FIND OUR LIST OF RECOMMENDED RETAIL PRICES BY SCANNING THE QR CODE. ALL OUR UPDATED RECOMMENDED RETAIL PRICES ARE ALSO AVAILABLE AT WWW.NWGROUP.CH



The Himalaya Shell MPC Extreme X™ Jacket.

POWERED WITH OUR HIGHEST GRADE OF MPC TECHNOLOGY.



OUTDOOR
COLLECTION.




Tenson[®]
EST. 1951

POWERED WITH MPC EXTREME X™ & RECCO TECHNOLOGY!

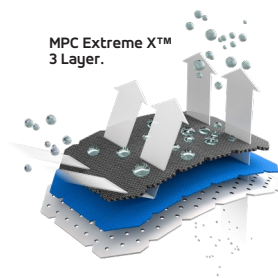
ART.NO.
5018146

Himalaya Shell MPC Extreme X™ Jkt Men.

The Himalaya Shell MPC Extreme X Jacket is a waterproof shell jacket powered with Tenson's proprietary MPC Extreme X™ technology (WP 20.000mm / MP 20.000 g/m2/24h) which combines lightweight design and extremely effective waterproofing with exceptional breathability.

The Himalaya Shell MPC Extreme Jacket has a range of features such as an adjustable hem, articulated sleeves, water repellent zips, ventilation, useful pockets and much more. The jacket features RECCO® Rescue system and comes in a PFC free water-repellent finish.

NEW
STYLE



988 ANTRACITHE

FEATURES

- Adjustable cuffs.
- Adjustable hem.
- Vertically & horizontally adjustable fixed hood.
- Helmet compatible hood.
- Articulated sleeves.
- Folded chinguard.
- One zippered innerpocket.
- One zippered sleeve pocket.
- Two zippered diagonal chest pockets.
- Recco® Rescue System.
- Taped seams.
- Water-repellent zippers.
- Ventilation zipper under arm.



SHELL 1

- ◇ MPC Extreme X™
- ◇ 3L Stretch.
- ◇ Micro rip stop.
- ◇ WP 20.000 mm.
- ◇ MP 20.000 g/m2/24h.
- ◇ PFC free waterrepellent finish
- ◇ 100% recycled polyester

SHELL 2

- ◇ MPC Extreme X™
- ◇ WP 20.000 mm.
- ◇ MP 20.000 g/m2/24h.
- ◇ Regular rip stop.
- ◇ 100% recycled polyester

FIT

- ◇ Regular.

SIZES

- ◇ S-3XL.

ART.NO.

- ◇ 5018146.

POWERED WITH MPC EXTREME X™ & RECCO TECHNOLOGY!

ART.NO.
5018145

Himalaya Shell MPC Extreme X™ Jkt Wmn.

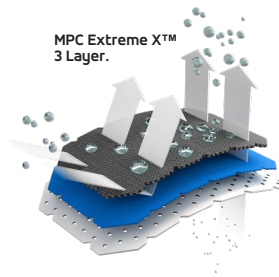
The Himalaya Shell MPC Extreme X Jacket is a waterproof shell jacket powered with Tenson's proprietary MPC Extreme X™ technology (WP 20.000mm / MP 20.000 g/m2/24h) which combines lightweight design and extremely effective waterproofing with exceptional breathability.

The Himalaya Shell MPC Extreme Jacket has a range of features such as an adjustable hem, articulated sleeves, water repellent zips, ventilation, useful pockets and much more. The jacket features RECCO® Rescue system and comes in a PFC free water-repellent finish.

NEW
STYLE



Outdoor



988 ANTRACITHE

FEATURES

- Adjustable cuffs.
- Adjustable hem.
- Vertically & horizontally adjustable fixed hood.
- Helmet compatible hood.
- Articulated sleeves.
- Folded chinguard.
- One zippered innerpocket.
- One zippered sleeve pocket.
- Two zippered diagonal chest pockets.
- Recco® Rescue System.
- Taped seams.
- Water-repellent zippers.
- Ventilation zipper under arm.



SHELL 1

- ◇ MPC Extreme X™
- ◇ 3l Stretch.
- ◇ Micro rip stop.
- ◇ WP 20.000 mm.
- ◇ MP 20.000 g/m2/24h.
- ◇ PFC free waterrepellent finish
- ◇ 100% recycled polyester

SHELL 2

- ◇ MPC Extreme X™
- ◇ WP 20.000 mm.
- ◇ MP 20.000 g/m2/24h.
- ◇ Regular rip stop.
- ◇ 100% recycled polyester

FIT

- ◇ Regular.

SIZES

- ◇ XS-XXL.

ART.NO.

- ◇ 5018145.



A scenic view of a mountain range with a wooden railing in the foreground. The mountains are covered in green vegetation and are slightly out of focus. The railing is made of weathered wood and runs across the bottom of the frame. The overall tone is natural and outdoorsy.

TXlite™ Shell Jacket.

POWERED WITH MPC TECHNOLOGY.

**OUTDOOR
COLLECTION.**




Tenson[®]
EST. 1951

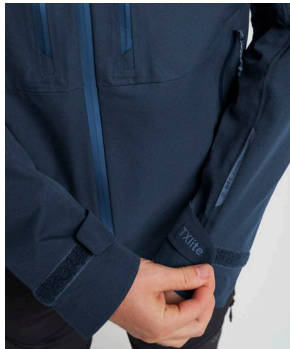
POWERED WITH MPC EXTREME™.

ART.NO.
5018100

TXlite™ Shell Jacket Men.

The TXlite Shell Jacket is a wind and waterproof 2,5-layer shell jacket made in comfortable stretch fabric and powered with Tenson's proprietary MPC Extreme membrane technology (WP 10 000 mm / MP 10 000 g/m²/24 h) that makes this jacket waterproof with exceptional breathability.

The MPC Extreme technology plus taped seams and water repellent zippers enable you to be active outside in the pouring rain for hours staying dry and comfortable. The features include adjustable hem, articulated sleeves, ventilation under arms, water repellent zips, practical pockets and much more. Comes with a PFC free water-repellent finish.



964 DARK BLUE



999 BLACK

FEATURES

- Adjustable cuffs
- Adjustable hem
- Adjustable hood vertical and horizontal
- Fixed hood
- Inner pocket
- Taped seams
- Two chest pockets with zippers
- Two front pockets with zippers
- Water repellent zippers
- Ventilation under arm

SHELL FABRIC

- ◇ MPC Extreme™ Shell
- ◇ 2,5L Stretch
- ◇ WP 10 000 MP 10 000
- ◇ PFC-free
- ◇ water-repellent finish

SHELL1

- ◇ 50% Recycled Polyester
- ◇ 50% Polyester

FIT

- ◇ Regular

SIZES

- ◇ S-4XL

ART.NO.

- ◇ 5018100



POWERED WITH MPC EXTREME™.

ART.NO.
5018099

TXlite™ Shell Jacket Women.

The TXlite Shell Jacket is a wind and waterproof 2,5-layer shell jacket made in comfortable stretch fabric and powered with Tenson's proprietary MPC Extreme membrane technology (WP 10 000 mm / MP 10 000 g/m²/24 h) that makes this jacket waterproof with exceptional breathability.

The MPC Extreme technology plus taped seams and water repellent zippers enable you to be active outside in the pouring rain for hours staying dry and comfortable. The features include adjustable hem, articulated sleeves, ventilation under arms, water repellent zips, practical pockets and much more. Comes with a PFC free water-repellent finish.



964 DARK BLUE



999 BLACK

FEATURES

- Adjustable cuffs
- Adjustable hem
- Adjustable hood vertical and horizontal
- Adjustable waist
- Fixed hood
- Inner pocket
- Taped seams
- Two chest pockets with zippers
- Two front pockets with zippers
- Water repellent zippers
- Ventilation under arm

SHELL FABRIC

- ◇ MPC Extreme™ Shell
- ◇ 2,5L Stretch
- ◇ WP 10 000 MP 10 000
- ◇ PFC-free
- ◇ water-repellent finish

SHELL1

- ◇ 50% Recycle Polyester
- ◇ 50% Polyester

FIT

- ◇ Regular

SIZES

- ◇ XS-XXL

ART.NO.

- ◇ 5018099





**OUTDOOR
COLLECTION.**



Outdoor TXlite™ Softshell Jackets.

FOR EVERYDAY OUTDOOR ACTIVITIES.



tenson®
EST. 1957

COMFY 4-WAY STRETCH.

ART.NO.
5018098

TXlite™ Softshell Jacket Men.

A wind and water repellent softshell jacket made in a soft and comfortable four way stretch with a soft fleece interior. Designed and developed for everyday outdoor activities such as hiking, hunting, fishing and skiing.

A timeless clean design meets smart functionality such as zippered ventilation under the arms, adjustable hood, adjustable arm hem plus several practical zippered pockets. Comes with a PFC free water-repellent finish.



964 DARK BLUE



999 BLACK

FEATURES

- Adjustable cuffs
- Adjustable hem
- Adjustable hood vertical and horizontal
- Fixed hood
- Two chest pockets with zippers
- Two front pockets with zippers
- Ventilation under arm

SHELL FABRIC

- ◇ Softshell
- ◇ Four Way Stretch
- ◇ WP 10 000 mm
- ◇ MP 5 000 g/m²/24h
- ◇ PFC free waterrepellent finish

SHELL1

- ◇ 88% Polyester
- 12% Spandex

FIT

- ◇ Regular

SIZES

- ◇ S-4XL

ART.NO.

- ◇ 5018098



COMFY 4-WAY STRETCH.

ART.NO.
5018097

TXlite™ Softshell Jacket Women.

A wind and water repellent softshell jacket made in a soft and comfortable four way stretch with a soft fleece interior. Designed and developed for everyday outdoor activities such as hiking, hunting, fishing and skiing.

A timeless clean design meets smart functionality such as zippered ventilation under the arms, adjustable hood, adjustable arm hem plus several practical zippered pockets. Comes with a PFC free water-repellent finish.



Outdoor



964 DARK BLUE



999 BLACK

FEATURES

- Adjustable cuffs
- Adjustable hem
- Adjustable hood vertical and horizontal
- Fixed hood
- Two chest pockets with zippers
- Two front pockets with zippers
- Ventilation under arm

SHELL FABRIC

- ◇ Softshell
- ◇ Four Way Stretch
- ◇ WP 10 000 mm
- ◇ MP 5 000 g/m²/24h
- ◇ PFC free waterrepellent finish

SHELL1

- ◇ 88% Polyester
- 12% Spandex

FIT

- ◇ Regular

SIZES

- ◇ XS-XXL

ART.NO.

- ◇ 5018097





**OUTDOOR
COLLECTION.**



Simplistic Versatility Powered with RDS Certified Down.

TENSON SHIBUI DOWN JACKET.



tenson
EST. 1951

POWERED WITH RDS CERTIFIED DOWN.

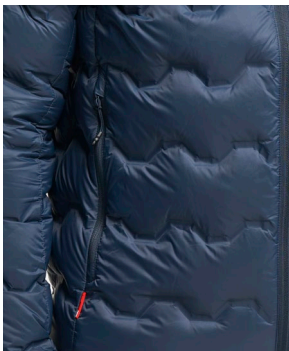
ART.NO.
5017961

TXlite™ Shibui Down Jacket Men.

A clean, simplistic, and lightweight RDS down (90/10 down/feather 650 fill power) jacket that is wind and water repellent make it great for any outdoor activity all year around.

The Shibui down jacket can be worn as an outer layer or under a shell jacket for extra warmth - it fits our popular Shibui ski shell jacket launched AW23 season like a glove! The RDS certified down is responsibly sourced down, fully traceable. Comes with a PFC free water-repellent finish.

Shibui - a Japanese word that describes an object that appears to be simple overall, but includes subtle details such as textures, functionality and performance describing our Tenson Shibui quite well - it's well-calibrated design is deliberately very clean and simplistic focusing primarily on functionality.



渋い

SHIBUI BY TENSON.



648 GREY GREEN



964 DARK BLUE



999 BLACK

FEATURES

- Articulated sleeves
- Elastic binding at sleeve ends
- Fill Power 650
- Fixed hood
- Folded chinguard
- Glued channels
- Insulation: Duckdown 90/10
- RDS certified down
- Two front pockets with zippers

SHELL FABRIC

- ◇ Light weight
- ◇ Windproof
- ◇ PFC-free water repellence
- ◇ 100% Recycled Polyamide

FIT

- ◇ Regular

SIZES

- ◇ S-3XL

ART.NO.

- ◇ 5017961

PADDING / FILLING

- ◇ RDS Certified down
- 90% Down
- 10% Feather
- ◇ 650 Fill power



POWERED WITH RDS CERTIFIED DOWN.

ART.NO.
5017960

TXlite™ Shibui Down Jacket Women.

A clean, simplistic, and lightweight RDS down (90/10 down/feather 650 fill power) jacket that is wind and water repellent make it great for any outdoor activity all year around.

The Shibui down jacket can be worn as an outer layer or under a shell jacket for extra warmth - it fits our popular Shibui ski shell jacket launched AW23 season like a glove! The RDS certified down is responsibly sourced down, fully traceable. Comes with a PFC free water-repellent finish.

Shibui - a Japanese word that describes an object that appears to be simple overall, but includes subtle details such as textures, functionality and performance describing our Tenson Shibui quite well - it's well-calibrated design is deliberately very clean and simplistic focusing primarily on functionality.



渋い

SHIBUI BY TENSON.



648 GREY GREEN



964 DARK BLUE



999 BLACK

FEATURES

- Articulated sleeves
- Elastic binding at sleeve ends
- Fill Power 650
- Fixed hood
- Folded chinguard
- Glued channels
- Insulation: Duckdown 90/10
- RDS certified down
- Two front pockets with zippers

SHELL FABRIC

- ◇ Light weight
- ◇ Windproof
- ◇ PFC-free water repellence
- ◇ 100% Recycled Polyamide

FIT

- ◇ Regular

SIZES

- ◇ XS-XXL

ART.NO.

- ◇ 5017960

PADDING / FILLING

- ◇ RDS Certified down
- 90% Down
- 10% Feather
- ◇ 650 Fill power



Outdoor



POWERED WITH RDS CERTIFIED DOWN!

ART.NO.
5018082

TXlite™ Shibui Down Collar Jacket Men.

NEW
STYLE

A lightweight RDS certified down (90/10 down/feather 650 fill power) jacket that is wind and water repellent which makes it great for any outdoor activity all year around. The Shibui down jacket can be worn as an outer layer or under a shell jacket for extra warmth - it fits our state-of-the-art Shibui ski shell jacket like a glove! Made in a 100% recycled polyamide fabric and glued channels filled with RDS certified down that is responsibly sourced down, fully traceable. It features articulated sleeves, an adjustable hem and two front pockets with zippers.

Comes with a PFC free water-repellent finish. The TXlite Shibui Down Jacket is designed and inspired by the Japanese expression Shibui that refers to a subtle and clean aesthetic featuring fine details such as choice of materials, textures and excellent functionality.



渋い
SHIBUI BY TENSON.



648 GREY GREEN

964 DARK BLUE

999 BLACK

FEATURES

- Adjustable hem.
- Articulated sleeves.
- Elastic binding at sleeve ends.
- Fill Power 650.
- Folded chinguard.
- Glued channels.
- Insulation: Duckdown 90/10.
- RDS certified down.
- Two front pockets with zippers.



SHELL FABRIC

- ◇ Light weight
- ◇ Windproof
- ◇ PFC-free water repellence
- ◇ 100% Recycled Polyamide

FIT

- ◇ Regular.

SIZES

- ◇ S-3XL.

ART.NO.

- ◇ 5018082.

PADDING / FILLING

- ◇ RDS Certified down
- 90% Down
- 10% Feather
- ◇ 650 Fill power

POWERED WITH RDS CERTIFIED DOWN!

ART.NO.
5018081

TXlite™ Shibui Down Collar Jacket Wmn.

A lightweight RDS certified down (90/10 down/feather 650 fill power) jacket that is wind and water repellent which makes it great for any outdoor activity all year around. The Shibui down jacket can be worn as an outer layer or under a shell jacket for extra warmth - it fits our state-of-the-art Shibui ski shell jacket like a glove! Made in a 100% recycled polyamide fabric and glued channels filled with RDS certified down that is responsibly sourced down, fully traceable. It features articulated sleeves, an adjustable hem and two front pockets with zippers.

Comes with a PFC free water-repellent finish. The TXlite Shibui Down Jacket is designed and inspired by the Japanese expression Shibui that refers to a subtle and clean aesthetic featuring fine details such as choice of materials, textures and excellent functionality.

NEW
STYLE



渋い
SHIBUI BY TENSON.



648 GREY GREEN

964 DARK BLUE

999 BLACK

FEATURES

- Adjustable hem.
- Articulated sleeves.
- Elastic binding at sleeve ends.
- Fill Power 650.
- Folded chinguard.
- Glued channels.
- Insulation: Duckdown 90/10.
- RDS certified down.
- Two front pockets with zippers.



SHELL FABRIC

- ◇ Light weight
- ◇ Windproof
- ◇ PFC-free water repellence
- ◇ 100% Recycled Polyamide

FIT

- ◇ Regular.

SIZES

- ◇ XS-XXL.

ART.NO.

- ◇ 5018081.

PADDING / FILLING

- ◇ RDS Certified down
- 90% Down
- 10% Feather
- ◇ 650 Fill power

Outdoor





**OUTDOOR
COLLECTION.**



Simplistic Versatility Powered with RDS Certified Down.

TENSON SHIBUI DOWN VEST.



Tenson[®]
EST. 1951

POWERED WITH RDS CERTIFIED DOWN!

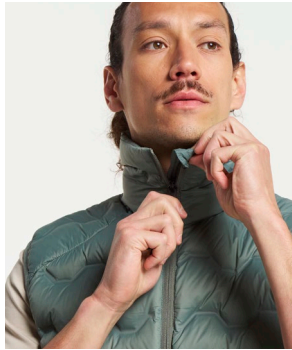
ART.NO.
5018084

TXlite™ Shibui Down Vest Men.

NEW
STYLE

A lightweight RDS certified down (90/10 down/feather 650 fill power) vest that is wind and water repellent which makes it great for any outdoor activity all year around. The Shibui down vest can be worn as an outer layer or under a shell jacket for extra warmth - it fits our state-of-the-art Shibui ski shell jacket like a glove! Made in a 100% recycled polyamide fabric and glued channels filled with RDS certified down that is responsibly sourced down, fully traceable. It features an adjustable hem and two front pockets with zippers.

Comes with a PFC free water-repellent finish. The TXlite Shibui Down vest is designed and inspired by the Japanese expression Shibui that refers to a subtle and clean aesthetic featuring fine details such as choice of materials, textures and excellent functionality.



渋い
SHIBUI BY TENSON.



648 GREY GREEN



964 DARK BLUE



999 BLACK

FEATURES

- Adjustable hem
- Elastic bindings at armhole
- Fill Power 650
- Folded chinguard
- Glued channels
- Insulation: Duckdown 90/10
- RDS certified down
- Two front pockets with zippers



SHELL FABRIC

- ◇ Light weight
- ◇ Windproof
- ◇ PFC-free water repellence
- ◇ 100% Recycled Polyamide

FIT

- ◇ Regular.

SIZES

- ◇ S-3XL.

ART.NO.

- ◇ 5018084.

PADDING / FILLING

- ◇ RDS Certified down
- 90% Down
- 10% Feather
- ◇ 650 Fill power

ART.NO.
5018083

POWERED WITH RDS CERTIFIED DOWN!

TXlite™ Shibui Down Vest Women.

A lightweight RDS certified down (90/10 down/feather 650 fill power) vest that is wind and water repellent which makes it great for any outdoor activity all year around. The Shibui down vest can be worn as an outer layer or under a shell jacket for extra warmth - it fits our state-of-the-art Shibui ski shell jacket like a glove! Made in a 100% recycled polyamide fabric and glued channels filled with RDS certified down that is responsibly sourced down, fully traceable. It features an adjustable hem and two front pockets with zippers.

Comes with a PFC free water-repellent finish. The TXlite Shibui Down vest is designed and inspired by the Japanese expression Shibui that refers to a subtle and clean aesthetic featuring fine details such as choice of materials, textures and excellent functionality.



渋い
SHIBUI BY TENSON.



Outdoor



648 GREY GREEN



964 DARK BLUE



999 BLACK

FEATURES

- Adjustable hem
- Elastic bindings at armhole
- Fill Power 650
- Folded chinguard
- Glued channels
- Insulation: Duckdown 90/10
- RDS certified down
- Two front pockets with zippers



SHELL FABRIC

- ◇ Light weight
- ◇ Windproof
- ◇ PFC-free water repellence
- ◇ 100% Recycled Polyamide

PADDING / FILLING

- ◇ RDS Certified down
- 90% Down
- 10% Feather
- ◇ 650 Fill power

FIT

- ◇ Regular.

SIZES

- ◇ XS-XXL..

ART.NO.

- ◇ 5018083.



**OUTDOOR
COLLECTION.**

Tenson Outdoor Collection. Midlayers & Polo's.

SPRING & SUMMER 2025.




Tenson[®]
EST. 1951

STAY WARM & COSY.

ART.NO.
5018221

Himalaya Full Zip Pocket Men.

Our Himalaya Full Zip Pocket fleece features Tenson's 100% recycled polyester lightweight quality which spells durability and versatile combined. A soft, cozy quality that is highly breathable and dries quickly, providing warmth and comfort at a minimal weight.

Wear it as an isolating midlayer or as stand-alone piece on a cool autumn day. It comes with a chest pocket and two zippered side pockets, perfect for warming your hands or storing your things, elastic cuffs and waist, a soft collar and a full-length zip – ready for any adventure!

NEW
STYLE



812 BEIGE



964 DARK BLUE



999 BLACK

FEATURES

- Elastic at wrist
- Elastic hem
- One chest pocket with zipper
- Two front pockets with zippers

SHELL FABRIC

- ◇ Fleece

SHELL1

- ◇ 100% Recycled Polyester

FIT

- ◇ Relaxed

SIZES

- ◇ S-3XL

ART.NO.

- ◇ 5018221



A TIMELESS DESIGN.

ART.NO.
5018220

Himalaya Full Zip Pocket Wmn.

Our Himalaya Full Zip Pocket fleece features Tenson's 100% recycled polyester lightweight quality which spells durability and versatile combined. A soft, cozy quality that is highly breathable and dries quickly, providing warmth and comfort at a minimal weight.

Wear it as an isolating midlayer or as stand-alone piece on a cool autumn day. It comes with a chest pocket and two zippered side pockets, perfect for warming your hands or storing your things, elastic cuffs and waist, a soft collar and a full-length zip – ready for any adventure!



Outdoor



812 BEIGE



964 DARK BLUE



999 BLACK

FEATURES

- Elastic at wrist
- Elastic hem
- Two front pockets with zippers

SHELL FABRIC

- ◇ Fleece

SHELL1

- ◇ 100% Recycled Polyester

FIT

- ◇ Relaxed

SIZES

- ◇ XS-XXL

ART.NO.

- ◇ 5018220



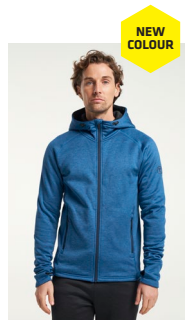
POWERED WITH POWER COMFORT™

ART.NO.
5017403

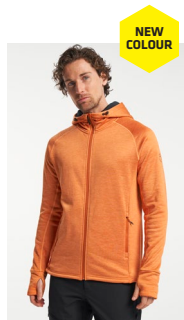
TXlite™ Midlayer Hoodie Zip Men.

A really comfortable hoodie that can be worn as a sweater or as a light jacket. It's very stretchy and has articulated extended arms with thumb holes so you can wear it as a midlayer.

The hood and the hem are adjustable and the zip has a folded chin guard. If you want to wear it as a mid-layer the extended sleeves with thumb loops will prevent the arms from getting caught under your jacket. It also has two front zip pockets to make sure you don't lose your things. Wear it as a comfy hoodie or as a light jacket in town or during outdoor activities.



056 BLUE



217 DARK ORANGE



933 LIGHT GREY



964 DARK BLUE



999 BLACK

FEATURES

- Adjustable hood vertical
- Articulated sleeves
- Extended sleeves with thumb loops
- Fixed hood
- Folded chin guard
- Hem adjustment
- Two front pockets with zippers

SHELL FABRIC

- ◇ Power Comfort
- ◇ Stretch
- ◇ Melange
- ◇ 95% Polyester
- ◇ 5% Elastane

FIT

- ◇ Regular

SIZES

- ◇ S-4XL

ART.NO.

- ◇ 5017403

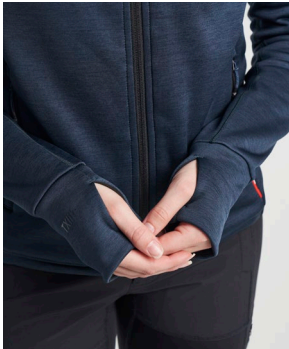
POWERED WITH POWER COMFORT™

ART.NO.
5017402

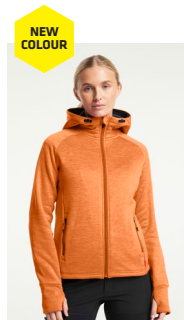
TXlite™ Midlayer Hoodie Zip Women.

A really comfortable hoodie that can be worn as a sweater or as a light jacket. It's very stretchy and has articulated extended arms with thumb holes so you can wear it as a midlayer.

The hood and the hem are adjustable and the zip has a folded chin guard. If you want to wear it as a mid-layer the extended sleeves with thumb loops will prevent the arms from getting caught under your jacket. It also has two front zip pockets to make sure you don't lose your things. Wear it as a comfy hoodie or as a light jacket in town or during outdoor activities.



056 BLUE



217 DARK ORANGE



933 LIGHT GREY



964 DARK BLUE



999 BLACK

FEATURES

- Adjustable fixed hood
- Articulated sleeves
- Extended sleeves with thumb loops
- Folded chinguard
- Hem adjustment
- Two front pockets with zippers

SHELL FABRIC

- ◇ Power Comfort
- ◇ Stretch
- ◇ Melange
- ◇ 95% Polyester
- ◇ 5% Elastane

FIT

- ◇ Regular

SIZES

- ◇ XS-XXL

ART.NO.

- ◇ 5017402

POWERED WITH POWER COMFORT™

ART.NO.
5017401

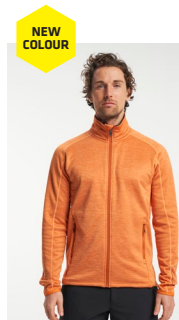
TXlite™ Midlayer Zip Men.

The TXlite Midlayer zip with its stretchy and flexible PowerComfort™ fabric sits comfortably under a jacket all day out in nature or be worn by itself if the weather allows it.

The zipper is equipped with a chin guard that prevents you from getting stuck when the zipper is pulled all the way up. To be able to easily take your belongings with you, it has two pockets on the front, both with zippers, where things can be stored without falling out. In addition to being used as a midlayer, it is perfect to wear by itself on cold spring days or late summer evenings out in.



056 BLUE



217 DARK ORANGE



933 LIGHT GREY



964 DARK BLUE



999 BLACK

FEATURES

- Adjustable hem
- Articulated sleeves
- Elastic at wrist
- Folded chinguard
- Two front pockets with zippers

SHELL FABRIC

- ◇ Power Comfort
- ◇ Stretch
- ◇ Melange
- ◇ 95% Polyester
- ◇ 5% Elastane

FIT

- ◇ Regular

SIZES

- ◇ S-4XL

ART.NO.

- ◇ 5017401

POWERED WITH POWER COMFORT™

ART.NO.
5017400

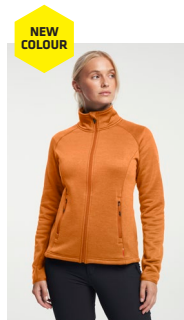
TXlite™ Midlayer Zip Women.

This women's midlayer zip is the perfect midlayer. It has a stretchy and flexible PowerComfort™ fabric that keeps you warm under a shell jacket. The midlayer zip also has a collar that keeps the cold away from your neck.

The zipper is equipped with a chin guard that prevents you from getting stuck when the zipper is pulled all the way up. To be able to easily take your belongings with you, it has two pockets on the front, both with zippers, where things can be stored without falling out. In addition to being used as a midlayer, it is perfect to wear by itself on cold spring days or late summer evenings out in.



056 BLUE



217 DARK ORANGE



933 LIGHT GREY



964 DARK BLUE



999 BLACK

FEATURES

- Adjustable hem
- Articulated sleeves
- Elastic at wrist
- Folded chinguard
- High collar
- Two front pockets with zippers

SHELL FABRIC

- ◇ Power Comfort
- ◇ Stretch
- ◇ Melange
- ◇ 95% Polyester
- ◇ 5% Elastane

FIT

- ◇ Regular

SIZES

- ◇ XS-XXL

ART.NO.

- ◇ 5017400







TXlite™ Outdoor Collection.
Midlayers & Polo's.

SPRING & SUMMER 2025.



Tenson®
EST. 1951

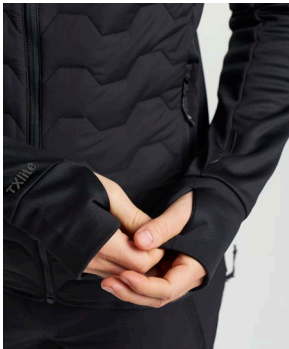
POWERED WITH POWER COMFORT™

ART.NO.
5018068

TXlite™ Hybrid Zip Men.

TXlite Hybrid Zip is the perfect midlayer jacket made from a comfortable stretchy material that's also very light and easy to pack. Wear it as a stand-alone jacket or under a shell jacket or rain jacket on colder days.

It has articulated extended arms and thumb holes to prevent the arms from getting caught under your jacket. The material is quick drying and it has quilted insulation at the front and the back to keep you extra warm. The two front pockets have zips so you won't lose any of your belongings.



999 BLACK



964 DARK BLUE

FEATURES

- Articulated sleeves
- Elastic hem
- Extended sleeves with thumb loops
- Folded chinguard
- Insulation: Quilted padding
- Two front pockets with zippers

SHELL FABRIC

- ◇ Power Comfort
- ◇ Quickdry
- ◇ Stretch
- ◇ 90% Polyester
- ◇ 10% Elastane

FIT

- ◇ Regular

SIZES

- ◇ S-4XL

ART.NO.

- ◇ 5018068

SHELL FABRIC 2

- ◇ Lightweight stretch
- ◇ 100% Polyamid

PADDING / FILLING

- ◇ 100% Polyester

POWERED WITH POWER COMFORT™

ART.NO.
5018067

TXlite™ Hybrid Zip Wmn.

TXlite Hybrid Zip is the perfect midlayer jacket made from a comfortable stretchy material that's also very light and easy to pack. Wear it as a stand-alone jacket or under a shell jacket or rain jacket on colder days.

It has articulated extended arms and thumb holes to prevent the arms from getting caught under your jacket. The material is quick drying and it has quilted insulation at the front and the back to keep you extra warm. The two front pockets have zips so you won't lose any of your belongings.



999 BLACK



964 DARK BLUE

FEATURES

- Articulated extended sleeves with thumb loops
- Elastic hem
- Folded chinguard
- Insulation: Quilted padding
- Two front pockets with

SHELL FABRIC

- ◇ Power Comfort
- ◇ Quickdry
- ◇ Stretch
- ◇ 90% Polyester
- ◇ 10% Elastane

SHELL FABRIC 2

- ◇ Lightweight
- ◇ 100% Polyamid

PADDING / FILLING

- ◇ Front and back quilted padding

FIT

- ◇ Regular

SIZES

- ◇ XS-XXL

ART.NO.

- ◇ 5018067

POWERED WITH POWER COMFORT™

ART.NO.
5018059

TXlite™ Hybrid Vest Men.

This lightweight vest in the TXlite series is a perfect midlayer that's designed to be easy to pack down and carry. The front and back are made from a stretchy quilted fabric with light padding in 100% polyamide.

The sides are made of 90% polyester and 10% elastane. Both the waist and armholes are elasticated and it has two zippered front pockets. The vest is windproof and has a raised collar that protects the neck. Wear this lightweight vest with our pants and shell jackets. On longer trips you can wear this vest as a warm midlayer or on its own if the temperature rises.



999 BLACK



964 DARK BLUE

FEATURES

- Elastic hem
- Folded chinguard
- Insulation: Quilted padding
- Two zippered front pockets

SHELL FABRIC

- ◇ Power Comfort
- ◇ Quickdry
- ◇ Stretch
- ◇ 90% Polyester
- ◇ 10% Elastane

FIT

- ◇ Regular

SIZES

- ◇ S-4XL

ART.NO.

- ◇ 5018059

SHELL FABRIC 2

- ◇ Lightweight stretch
- ◇ 100% Polyamid

PADDING / FILLING

- ◇ 100% Polyester

POWERED WITH POWER COMFORT™

ART.NO.
5018045

TXlite™ Hybrid Vest Wmn.

This lightweight vest in the TXlite series is a perfect midlayer that's designed to be easy to pack down and carry. The front and back are made from a stretchy quilted fabric with light padding in 100% polyamide.

The sides are made of 90% polyester and 10% elastane. Both the waist and armholes are elasticated and it has two zippered front pockets. The vest is windproof and has a raised collar that protects the neck. Wear this lightweight vest with our pants and shell jackets. On longer trips you can wear this vest as a warm midlayer or on its own if the temperature rises.



999 BLACK

964 DARK BLUE

FEATURES

- Elastic hem
- Folded chinguard
- Insulation: Quilted padding
- Two zippered front pockets

SHELL FABRIC

- ◇ Power Comfort
- ◇ Quickdry
- ◇ Stretch
- ◇ 90% Polyester
- ◇ 10% Elastane

FIT

- ◇ Regular

SIZES

- ◇ XS-XXL

ART.NO.

- ◇ 5018045

SHELL FABRIC 2

- ◇ Lightweight stretch
- ◇ 100% Polyamid

PADDING / FILLING

- ◇ 100% Polyester



TXlite™ Outdoor Collection. Midlayers & Polo's.

SPRING & SUMMER 2025.



POWERED WITH POWER COMFORT™

ART.NO.
5018114

TXlite™ Windbloc Full Zip Men.

TXlite™ Windbloc full zip is a perfect full zippered mid-layer top made from a comfortable stretchy Power Comfort™ material that's very light and packable. The upper torso area is covered with a windproof recycled polyester fabric, making sure you stay comfortable at all times. Wear it as a stand-alone piece or under a shell jacket or rain jacket on colder days.

Made in a comfortable stretchy Power Comfort™ - 90% polyester and 10% elastane, which makes it stretchy and quick drying, keeping you agile when it's time for outdoor activities. Comes with one hidden zippered chest pocket and two zippered side pockets so you won't lose any of your belongings.



NEW
STYLE



648 GREY GREEN



964 DARK BLUE



999 BLACK

FEATURES

- Articulated sleeves
- Folded chinguard
- High collar
- Two front pockets with zippers
- One zippered chest pocket

SHELL FABRIC

- ◇ Power Comfort
- ◇ Stretch
- ◇ 90% Recycled Polyester
- ◇ 10% Elastane

FIT

- ◇ Regular

SIZES

- ◇ S-3XL

ART.NO.

- ◇ 5018114

SHELL FABRIC 2

- ◇ Light Weight Stretch
- ◇ 100% Polyamide



ART.NO.
5018113

TXlite™ Windbloc Full Zip Women.

TXlite™ Windbloc full zip is a perfect full zippered mid-layer top made from a comfortable stretchy Power Comfort™ material that's very light and packable. The upper torso area is covered with a windproof recycled polyester fabric, making sure you stay comfortable at all times. Wear it as a stand-alone piece or under a shell jacket or rain jacket on colder days.

Made in a comfortable stretchy Power Comfort™ - 90% polyester and 10% elastane, which makes it stretchy and quick drying, keeping you agile when it's time for outdoor activities. Comes with one hidden zippered chest pocket and two zippered side pockets so you won't lose any of your belongings.



NEW
STYLE



648 GREY GREEN



964 DARK BLUE



999 BLACK

FEATURES

- Articulated sleeves
- Folded chinguard
- High collar
- Two front pockets with zippers
- One zippered chest pocket

SHELL FABRIC

- ◇ Power Comfort
- ◇ Stretch
- ◇ 90% Recycled Polyester
- ◇ 10% Elastane

FIT

- ◇ Regular

SIZES

- ◇ XS-XXL

ART.NO.

- ◇ 5018113

SHELL FABRIC 2

- ◇ Light Weight Stretch
- ◇ 100% Polyamide



POWERED WITH POWER COMFORT™

ART.NO.
5018116

TXlite™ Windbloc Half Zip Men.

TXlite™ Windbloc half zip is a perfect midlayer top made from a comfortable stretchy Power Comfort™ material that's very light and packable. The upper torso area is covered with a windproof polyamide fabric, making sure you stay comfortable at all times. Wear it as a stand-alone piece or under a shell jacket or rain jacket on colder days.

Made in a comfortable stretchy Power Comfort™ - 90% polyester and 10% elastane, which makes it stretchy and quick drying, keeping you agile when it's time for outdoor activities. Comes with one hidden zippered chest pocket and two zippered side pockets so you won't lose any of your belongings.



648 GREY GREEN



964 DARK BLUE



999 BLACK

FEATURES

- Articulated sleeves
- Folded chinguard
- High collar
- Half zip at neck opening

SHELL FABRIC

- ◇ Power Comfort
- ◇ Stretch
- ◇ 90% Recycled Polyester
- ◇ 10% Elastane

SHELL FABRIC 2

- ◇ Light Weight Stretch
- ◇ 100% Polyamide

FIT

- ◇ Regular

SIZES

- ◇ S-3XL

ART.NO.

- ◇ 5018116



POWERED WITH POWER COMFORT™

ART.NO.
5018115

TXlite™ Windbloc Half Zip Women.

TXlite™ Windbloc half zip is a perfect midlayer top made from a comfortable stretchy Power Comfort™ material that's very light and packable. The upper torso area is covered with a windproof polyamide fabric, making sure you stay comfortable at all times. Wear it as a stand-alone piece or under a shell jacket or rain jacket on colder days.

Made in a comfortable stretchy Power Comfort™ - 90% polyester and 10% elastane, which makes it stretchy and quick drying, keeping you agile when it's time for outdoor activities. Comes with one hidden zippered chest pocket and two zippered side pockets so you won't lose any of your belongings.



Outdoor



648 GREY GREEN



964 DARK BLUE



999 BLACK

FEATURES

- Articulated sleeves
- Folded chinguard
- High collar
- Half zip at neck opening

SHELL FABRIC

- ◇ Power Comfort
- ◇ Stretch
- ◇ 90% Recycled Polyester
- ◇ 10% Elastane

SHELL FABRIC 2

- ◇ Light Weight Stretch
- ◇ 100% Polyamide

FIT

- ◇ Regular

SIZES

- ◇ XS-XXL

ART.NO.

- ◇ 5018115





A woman with a black cap and a light blue polo shirt is smiling and looking to the side in a forest setting. She is wearing dark shorts. The background is a blurred forest with green foliage and trees.

TXlite™ Outdoor Collection. Midlayers & Polo's.

SPRING & SUMMER 2025.



Tenson®

EST. 1951

QUICKDRYING & WICKING PROPERTIES.

ART.NO.
5018060

TXlite™ Melange Polo Men.

The TXlite Melange Polo is a stylish polo shirt for men featuring the classic collar and three button look made in 100% recycled polyester.

It has a discreet Tenson logo at the upper back and a slit at the sides for increased mobility. Wear it on the golf course, when you're out sailing or for everyday use. You can never have too many polo shirts as they are such a versatile wardrobe staple; they're as comfortable as a T-shirt but with a smarter look and work well in most settings. This polo shirt is made of 100% polyester, which makes it quick-drying and extra comfortable.



653 GREY GREEN



590 DARK NAVY



999 BLACK

FEATURES

- 3-hole button opening
- Flat knit collar
- Flat knit sleeve ends
- Short inset sleeve
- Slit at sides

SHELL FABRIC

- ◇ Quick Dry
- ◇ Wicking
- ◇ 100% Recycle Polyester

FIT

- ◇ Regular

SIZES

- ◇ S-4XL

ART.NO.

- ◇ 5018060



QUICKDRYING & WICKING PROPERTIES.

ART.NO.
5018061

TXlite™ Melange Polo Women.

The TXlite Melange Polo is a stylish quick-drying polo shirt for women featuring the classic collar and three button look made in 100% recycled polyester. It has a discreet Tenson logo at the upper back and a slit at the sides for increased mobility.

Wear it on the golf course, when you're out sailing or for everyday use. You can never have too many polo shirts as they are such a versatile wardrobe staple; they're as comfortable as a T-shirt but with a smarter look and work well in most settings.



653 GREY GREEN



590 DARK NAVY



999 BLACK

FEATURES

- 3-hole button opening
- Flat knit collar
- Flat knit sleeve ends
- Short inset sleeve
- Slit at sides

SHELL FABRIC

- ◇ Quick Dry
- ◇ Wicking
- ◇ 100% Recycle Polyester

FIT

- ◇ Regular

SIZES

- ◇ XS-XXL

ART.NO.

- ◇ 5018061



QUICKDRYING & WICKING PROPERTIES.

ART.NO.
5018062

TXlite™ Q-Dry Polo Men.

A functional polo shirt is a staple for racket sports and works just as well for outdoor activities and other sports.

It's made of 100% recycled polyester and quick drying, perfect for when you work up a sweat or on hot days. It has a three-button collar and a discreet Tenson logo at the upper back. It comes in a regular fit.



001 WHITE

590 DARK NAVY

999 BLACK

FEATURES

- 3-hole button opening
- Flat knit collar
- Flat knit sleeve ends
- Short inset sleeve
- Slit at sides

SHELL FABRIC

- ◇ Pique
- ◇ Quick Dry
- ◇ Wicking
- ◇ 100% Recycle Polyester

FIT

- ◇ Regular

SIZES

- ◇ S-4XL

ART.NO.

- ◇ 5018062



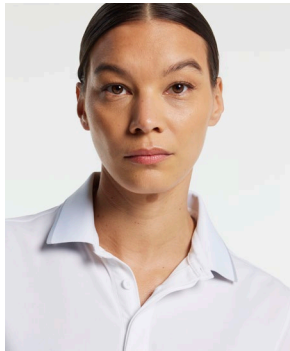
QUICKDRYING & WICKING PROPERTIES.

ART.NO.
5018078

TXlite™ Q-Dry Polo Women.

A functional polo shirt is a staple for racket sports and works just as well for outdoor activities and other sports.

It's made of 100% recycled polyester and quick drying, perfect for when you work up a sweat or on hot days. It has a three-button collar and a discreet Tenson logo at the upper back. It comes in a regular fit.



001 WHITE

590 DARK NAVY

999 BLACK

FEATURES

- 3-hole button opening
- Flat knit collar
- Flat knit sleeve ends
- Short inset sleeve
- Slit at sides

SHELL FABRIC

- ◇ Pique
- ◇ Quick Dry
- ◇ Wicking
- ◇ 100% Recycle Polyester

FIT

- ◇ Regular

SIZES

- ◇ XS-XXL

ART.NO.

- ◇ 5018078



QUICKDRYING & WICKING PROPERTIES.

ART.NO.
5018211

TXlite™ Tri-Blend Polo Men.

Our Tri-blend polo is a functional polo shirt is a staple for everyday life and works just as well for outdoor activities and other sports.

The TXlite Tri-Blend Polo is a quick-drying cotton-feel polo shirt for men featuring a classic collar in a three-button look, made from organic cotton, recycled polyester, and spandex. It has a discreet Tenson logo on the left arm and slits at the sides for increased mobility. You can never have too many polo shirts as they are such a versatile wardrobe staple; they're as comfortable as a T-shirt but with a smarter look, to ensure you feel confident in every situation.



001 WHITE



056 BLUE



653 GREY GREEN



711 SAND



964 DARK BLUE



999 BLACK

FEATURES

- 3-hole button opening
- Flat knit collar
- Flat knit sleeve ends
- Short inset sleeve
- Slit at sides

SHELL FABRIC

- ◇ Pique
- ◇ Quick Dry
- ◇ Wicking
- ◇ 55% organic cotton
- ◇ 42% recycle polyester
- ◇ 3% spandex

FIT

- ◇ Regular

SIZES

- ◇ S-4XL

ART.NO.

- ◇ 5018211



QUICKDRYING & WICKING PROPERTIES.

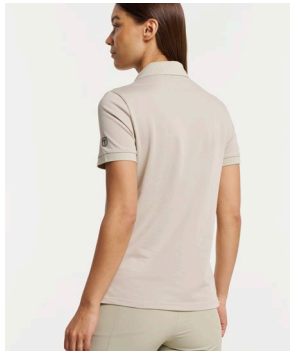
ART.NO.
5018217

TXlite™ Tri Blend Polo Women.

NEW
STYLE

Our Tri-blend polo is a functional polo shirt is a staple for everyday life and works just as well for outdoor activities and other sports.

The TXlite Tri-Blend Polo is a quick-drying cotton-feel polo shirt for men featuring a classic collar in a three-button look, made from organic cotton, recycled polyester, and spandex. It has a discreet Tenson logo on the left arm and slits at the sides for increased mobility. You can never have too many polo shirts as they are such a versatile wardrobe staple; they're as comfortable as a T-shirt but with a smarter look, to ensure you feel confident in every situation.



001 WHITE



056 BLUE



653 GREY GREEN



711 SAND



964 DARK BLUE



999 BLACK

FEATURES

- 3-hole button opening
- Flat knit collar
- Flat knit sleeve ends
- Short inset sleeve
- Slit at sides

SHELL FABRIC

- ◇ Pique
- ◇ Quick Dry
- ◇ Wicking
- ◇ 55% organic cotton
- ◇ 42% recycle polyester
- ◇ 3% spandex

FIT

- ◇ Regular

SIZES

- ◇ XS-XXL

ART.NO.

- ◇ 5018217





TXlite™ Outdoor Collection. Pants & Shorts.

—
SPRING & SUMMER 2025.




Tenson[®]
EST. 1951

POWERED WITH COMFY STRETCH.

ART.NO.
5018048

TXlite™ Adventure Pants Men.

Durable and stylish quick drying outdoor stretch pants that are perfect for your everyday life as well as outdoor adventures with family and friends. The waist is adjustable for a great fit.

The two front pockets have zips to keep your phone, wallet and keys safe. There are two extra pockets on the back for extra storage. These pants are made from a lightweight fabric that can be packed in even the smallest bag, perfect for long hikes when the weather looks changeable. Comes with a PFC free water-repellent finish.



999 BLACK

FEATURES

- Adjustable waist
- Two back pockets
- Two front pockets with zippers

SHELL FABRIC

- ◇ Stretch
- ◇ Quick dry
- ◇ Wicking

SHELL FABRIC

- ◇ 90% Polyamide
- ◇ 10% Spandex

FIT

- ◇ Slim

SIZES

- ◇ S-3XL

ART.NO.

- ◇ 5018048

POWERED WITH COMFY STRETCH.

ART.NO.
5018047

TXlite™ Adventure Pants Wmn.

Durable and stylish quick drying outdoor stretch pants that are perfect for your everyday life as well as outdoor adventures with family and friends. The waist is adjustable for a great fit.

The two front pockets have zips to keep your phone, wallet and keys safe. There are two extra pockets on the back for extra storage. These pants are made from a lightweight fabric that can be packed in even the smallest bag, perfect for long hikes when the weather looks changeable. Comes with a PFC free water-repellent finish.



999 BLACK

FEATURES

- Adjustable waist
- Two back pockets
- Two front pockets with zippers

SHELL FABRIC

- ◇ Stretch
- ◇ Quick dry
- ◇ Wicking

SHELL FABRIC

- ◇ 90% Polyamide
- ◇ 10% Spandex

FIT

- ◇ Slim

SIZES

- ◇ XS-XXL

ART.NO.

- ◇ 5018047

POWERED WITH 4-WAY STRETCH.

ART.NO.
5018064

TXlite™ Flex Pants Men.

Really comfortable stylish everyday hiking pants made from a durable four-way stretch material, comes with an adjustable waist and ankle cuffs, articulated knees and excellent ventilation.

Features reinforced areas, five zippered pockets and a detachable boot hook to keep the pants in place. Tenson's TXlite series consists of light-weight, packable every day outdoor clothes made for adventure travel. Comes with a PFC free water-repellent finish.



685 DARK OLIVE



964 DARK BLUE



999 BLACK

FEATURES

- Adjustable leg ending
- Adjustable waist
- Articulated knees
- One zippered back pocket
- Reinforcement
- Removable plastic boot hook at leg hem
- Two front pockets with zippers
- Two leg pockets with zippers
- Ventilation
- Zip in leg ending

SHELL FABRIC

- ◇ Four Way Stretch
- ◇ Durable
- ◇ Quick Dry
- ◇ Wicking

SHELL FABRIC

- ◇ 92% Polyamide
- ◇ 8% Spandex

FIT

- ◇ Slim

SIZES

- ◇ S-3XL

ART.NO.

- ◇ 5018064



POWERED WITH 4-WAY STRETCH.

ART.NO.
5018063

TXlite™ Flex Pants Women.

Really comfortable stylish everyday hiking pants made from a durable four-way stretch material, comes with an adjustable waist and ankle cuffs, articulated knees and excellent ventilation.

Features reinforced areas, five zippered pockets and a detachable boot hook to keep the pants in place. Tenson's TXlite series consists of light-weight, packable every day outdoor clothes made for adventure travel. Comes with a PFC free water-repellent finish.



685 DARK OLIVE



964 DARK BLUE



999 BLACK

FEATURES

- Adjustable leg ending
- Adjustable waist
- Articulated knees
- One zippered back pocket
- Reinforcement
- Removable plastic boot hook at leg hem
- Two front pockets with zippers
- Two leg pockets with zippers
- Ventilation
- Zip in leg ending

SHELL FABRIC

- ◇ Four Way Stretch
- ◇ Durable
- ◇ Quick Dry
- ◇ Wicking

SHELL FABRIC

- ◇ 92% Polyamide
- ◇ 8% Spandex

FIT

- ◇ Slim

SIZES

- ◇ XS-XXL

ART.NO.

- ◇ 5018063

POWERED WITH 4-WAY STRETCH.

ART.NO.
5018066

TXlite™ Flex Shorts Men.

Really comfortable stylish everyday hiking shorts made from a durable four-way stretch material, designed for everyday outdoor activities such as going fishing, hiking, hunting or just off to the city.

Their comfortable stretch material makes them very comfortable to wear and easy to pack. Features five zippered pockets with room for essentials like your phone and wallet. Tight fit, choose one size bigger for a more relaxed fit. Tenson's TXlite series consists of lightweight, packable everyday outdoor clothes made for adventure travel. Comes with a PFC free water-repellent finish.



685 DARK OLIVE



964 DARK BLUE



999 BLACK

FEATURES

- Adjustable waist
- One zippered back pocket
- Two front pockets with zippers
- Two leg pockets with zippers

SHELL FABRIC

- ◇ Four Way Stretch
- ◇ Durable
- ◇ Quick Dry
- ◇ Wicking

SHELL FABRIC

- ◇ 92% Polyamide
- ◇ 8% Spandex

FIT

- ◇ Slim

SIZES

- ◇ S-3XL

ART.NO.

- ◇ 5018066

POWERED WITH 4-WAY STRETCH.

ART.NO.
5018065

TXlite™ Flex Shorts Women.

Really comfortable stylish everyday hiking shorts made from a durable four-way stretch material, designed for everyday outdoor activities such as going fishing, hiking, hunting or just off to the city.

Their comfortable stretch material makes them very comfortable to wear and easy to pack. Features five zipped pockets with room for essentials like your phone and wallet. Tight fit, choose one size bigger for a more relaxed fit. Tenson's TXlite series consists of lightweight, packable everyday outdoor clothes made for adventure travel. Comes with a PFC free water-repellent finish.



685 DARK OLIVE



964 DARK BLUE



999 BLACK

FEATURES

- Adjustable waist
- One zippered back pocket
- Two front pockets with zippers
- Two leg pockets with zippers

SHELL FABRIC

- ◇ Four Way Stretch
- ◇ Durable
- ◇ Quick Dry
- ◇ Wicking

SHELL FABRIC

- ◇ 92% Polyamide
- ◇ 8% Spandex

FIT

- ◇ Slim

SIZES

- ◇ XS-XXL

ART.NO.

- ◇ 5018065





Lifestyle Collection. Jackets & Pile's.

AUTUMN & WINTER 2024.



Tenson[®]
EST. 1951

POWERED WITH MPC EXTREME™.

ART.NO.
5017178

Vision Parka Men.

The Vision parka is a wind and waterproof winter jacket for men with a timeless minimalistic design that will stand the test of time. The jacket comes insulated with AirPush Insulate™ that provides vapor management even when wet. Powered with taped seams and Tenson's proprietary MPC Extreme technology (WP 10.000mm / MP 10.000 g/m2/24h) which combines extremely effective waterproofing with exceptional breathability.

For extra ventilation you can open the two-way zip from the bottom to cool off. Both the cuffs and the hood are adjustable. There are two discreet breast pockets with zips, two regular pockets for storage and an inner pocket with a zip. The Vision MPC Extreme Jacket will serve you well both on cold winter days and in the rain. Comes with E-dye polyester lining and a PFC free water-repellent finish.



964 DARK BLUE



999 BLACK

FEATURES

- Adjustable cuffs
- Adjustable hem
- Vertical and horizontal adjustable hood
- Adjustable waist
- Airpush Insulate-synthetic down filling
- Articulated sleeves
- Fixed hood
- Inner lycra cuffs at sleeve ends
- Inner pocket with elastic mesh
- Inner pocket with zip
- One sleeve pocket with zipper
- Taped seams
- Two chest pockets with zippers
- Two way hand pockets at front
- Two way zip at front
- Two zippered front pockets



SHELL FABRIC

- ◇ MPC Extreme
- ◇ 2 layer stretch
- ◇ WP 10 000 mm
- ◇ MP 10 000 g/m2/24 h
- ◇ PFC free waterrepellent finish

SHELL1

- ◇ 59% Recycle Polyester
- ◇ 41% Polyester

LINING

- ◇ 100% Polyester

PADDING

- ◇ 100% Recycle Polyester

FIT

- ◇ Regular

SIZES

- ◇ S-3XL

ART.NO.

- ◇ 5017178

POWERED WITH MPC EXTREME™.

ART.NO.
5018187

Vision Parka Women.

The Vision Parka is a wind and waterproof winter jacket for women with a timeless minimalistic design that will stand the test of time. The parka comes insulated with AirPush Insulate™ that provides vapour management even when wet. Powered with taped seams and Tenson's proprietary MPC Extreme technology (WP 10.000mm / MP 10.000 g/m2/24h) which combines extremely effective waterproofing with exceptional breathability.

For extra ventilation you can open the two-way zip from the bottom to cool off. Both the cuffs and the hood are adjustable. There are two discreet breast pockets with zips, two regular pockets for storage and an inner pocket with a zip. The Vision MPC Extreme Parka will serve you well both on cold winter days and in the rain. Comes with E-dye polyester lining and a PFC free water-repellent finish.



964 DARK BLUE



999 BLACK

FEATURES

- Adjustable cuffs
- Adjustable hem
- Vertical and horizontal adjustable hood
- Adjustable waist
- Airpush Insulate-synthetic down filling
- Articulated sleeves
- Fixed hood
- Inner lycra cuffs at sleeve ends
- Inner pocket with elastic mesh
- Inner pocket with zip
- One sleeve pocket with zipper
- Taped seams
- Two chest pockets with zippers
- Two way hand pockets at front
- Two way zip at front
- Two zippered front pockets



SHELL FABRIC

- ◇ MPC Extreme
- ◇ 2 layer stretch
- ◇ WP 10 000 mm
- ◇ MP 10 000 gr/m2/24h
- ◇ PFC free waterrepellent finish

SHELL1

- ◇ 59% Recycle Polyester
- ◇ 41% Polyester

LINING

- ◇ 100% Polyester

PADDING

- ◇ 100% Recycle Polyester

FIT

- ◇ Regular

SIZES

- ◇ XS-XXL

ART.NO.

- ◇ 5018187

ART.NO.
5017908

Dew Point Parka Men.

The Dew Point parka is a 2,5-layer waterproof parka powered with taped seams and Tenson's proprietary MPC Extreme technology (WP 10.000mm / MP 10.000 g/m²/24h) which combines very effective waterproofing with exceptional breathability.

The emergency hood hidden inside collar can be adjusted to customize the fit and can also be removed if it's not needed. The jacket has adjustable cuffs that can be tightened in extreme weather. The jacket is also stretchy and has articulated sleeves to provide optimal movement without the sleeves riding up at full stretch. A comfortable, practical and stylish parka that's bound to become a favorite.



964 DARK BLUE



999 BLACK

FEATURES

- 2 way zip
- Adjustable cuffs
- Adjustable hood vertical
- Fleece inside neck at back
- High collar
- Hood folded inside collar
- Innerpocket with zip
- Taped seams
- Two front pockets with zippers
- Water repellent zippers
- Ventilation under yoke at back

SHELL FABRIC

- ◇ MPC Extreme™
- 2.5L Stretch
- ◇ WP 10 000 MP 10 000
- ◇ PFC-free
- water-repellent finish

SHELL1

- ◇ 50% Recycle Polyester
- 50% Polyester

FIT

- ◇ Regular

SIZES

- ◇ S-3XL

ART.NO.

- ◇ 5017908



POWERED WITH TENSON'S MPC EXTREME™

ART.NO.
5017779

Misty Parka Women.

Misty shell parka is a women's 2,5-layer waterproof parka powered with taped seams and Tenson's proprietary MPC Extreme technology (WP 10.000mm / MP 10.000 g/m²/24h) which combines very effective waterproofing with exceptional breathability.

The soft stretchy fabric allows great freedom of movement. Misty has a fixed hood and both the hood and sleeves can be adjusted to get the ideal fit.



964 DARK BLUE



999 BLACK

FEATURES

- Adjustable cuffs
- Adjustable hem
- Adjustable hood vertical and horizontal
- Articulated sleeves
- Fixed hood
- Taped seams
- Two front pockets with zippers
- Water repellent zippers
- Ventilation

SHELL FABRIC

- ◇ MPC Extreme Shell
- ◇ 2,5 layer stretch
- ◇ WP 10 000 mm
- ◇ MP 10 000 gr/m²/24h
- ◇ PFC free
- waterrepellent finish

FIT

- ◇ Regular

SIZES

- ◇ XS-XXL

ART.NO.

- ◇ 5017779

SHELL1

- ◇ 50% Recycle Polyester
- 50% Polyester



A STYLISH CLASSIC PU RAINCOAT.

ART.NO.
5017644

Apelviken PU Coat Men.

Apelviken has a classic PU raincoat design with a straight silhouette and soft jersey fabric on the inside, it's made of 100% polyurethane with a soft tricot backing, welded seams and a 5.000mm waterproof rating to keep you dry in the heaviest downpours. Features adjustable cuffs.

It has a 5.000mm waterproof rating, a comfortable fixed hood, and sealed seams to keep you dry.



NEW
COLOUR



649 OLIVE



964 DARK BLUE



999 BLACK



999 BLACK



649 OLIVE

Apelviken PU Hat Unisex.

SIZES

◇ S/M, L/XL

ART.NO.

◇ 5018253

PRICE

◇ INKL MOMS SEK 300

EXKL MOMS SEK 200

FEATURES

- Adjustable cuffs
- Articulated sleeves
- Fixed hood

SHELL FABRIC

- ◇ WP 5 000 mm
- ◇ Tricot backing
- ◇ All seams welded

SHELL1

- ◇ 100% PU

FIT

- ◇ Regular

SIZES

- ◇ S-4XL

ART.NO.

- ◇ 5017644

A STYLISH CLASSIC PU RAINCOAT.

ART.NO.
5017643

Apelviken PU Coat Women.

Apelviken is a women's raincoat with an A-line silhouette and a classic stylish look. It's made of 100% polyurethane with a soft tricot backing, welded seams and a 5.000mm waterproof rating to keep you dry in the heaviest downpours. Features adjustable cuffs.

The raincoat has adjustable cuffs and articulated sleeves for the best possible fit. Comes with a fixed hood.



NEW
COLOUR



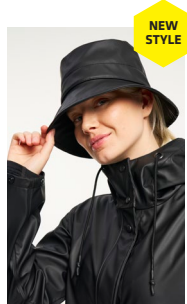
649 OLIVE



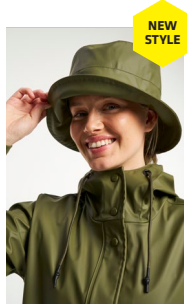
964 DARK BLUE



999 BLACK



999 BLACK



649 OLIVE

Apelviken PU Hat Unisex.

SIZES

- ◇ S/M, L/XL

ART.NO.

- ◇ 5018253

PRICE

- ◇ INKL MOMS SEK 300
- ◇ EXKL MOMS SEK 200

FEATURES

- Adjustable cuffs
- Articulated sleeves
- Fixed hood

SHELL FABRIC

- ◇ WP 5 000
- ◇ Tricot backing
- ◇ All seams welded

SHELL1

- ◇ 100% PU

FIT

- ◇ Relaxed

SIZES

- ◇ XS-XXL

ART.NO.

- ◇ 5017643

STAY WARM & COSY.

ART.NO.
5017896

Yoke Full Zip Men.

A full-zip fleece with a timeless design that will keep you warm all year round. It's perfect under a shell jacket or worn on its own on chilly days. It looks great with a pair of jeans or our outdoor pants for a complete look.

You can stow your phone and keys in the two zippered pockets on the front. It also has a discreet Tenson logo on the arm. Yoke full zip works perfectly as a sweater for weekdays in town and weekends outdoors.



711 SAND



999 BLACK

FEATURES

- Elastic at wrist
- Elastic hem
- One chest pocket with zipper
- Two front pockets with zippers

SHELL FABRIC

- ◇ Pile

SHELL1

- ◇ 100% Recycle Polyester

FIT

- ◇ Relaxed

SIZES

- ◇ S-3XL

ART.NO.

- ◇ 5017896



A TIMELESS DESIGN.

ART.NO.
5017895

Yoke Full Zip Women.

A full-zip fleece with a timeless design that will keep you warm all year round. It's perfect under a shell jacket or worn on its own on chilly days. It looks great with a pair of jeans or our outdoor pants for a complete look.

You can stow your phone and keys in the two zippered pockets on the front. It also has a discreet Tenson logo on the arm. Yoke full zip works perfectly as a sweater for weekdays in town and weekends outdoors.



711 SAND



999 BLACK

FEATURES

- Elastic at wrist
- Elastic hem
- Two front pockets with zippers

SHELL FABRIC

- ◇ Pile

SHELL1

- ◇ 100% Recycle Polyester

FIT

- ◇ Relaxed

SIZES

- ◇ XS-XXL

ART.NO.

- ◇ 5017895

STAY WARM & COSY.

ART.NO.
5017646

Yoke Half Zip Men.

A half-zip fleece with a timeless design that will keep you warm all year round. It's perfect under a shell jacket or worn on its own on chilly days. It looks great with a pair of jeans or our outdoor pants for a complete look. It has a zipper at the neck as a stylish detail which allows you to regulate your temperature.

You can stow your phone and keys in the two zippered pockets on the front. It also has a discreet Tenson logo on the arm. Yoke Half Zip works perfectly as a sweater for weekdays in town and weekends outdoors.



711 SAND



999 BLACK

FEATURES

- Elastic at wrist
- Elastic hem
- Half zip at neck opening
- One chest pocket with zipper
- Two front pockets with zippers

SHELL FABRIC

- ◇ Pile

SHELL1

- ◇ 100% Recycle Polyester

FIT

- ◇ Relaxed

SIZES

- ◇ S-3XL

ART.NO.

- ◇ 5017646

A TRUE WARDROBE STAPLE.

ART.NO.
5017645

Yoke Half Zip Women.

This women's half-zip fleece is a true wardrobe staple, made for everyday life and outdoor activities keeping you warm all year round. Wear it under a shell jacket on rainy days, as a warm layer on a chilly summer evening or under a winter jacket when the temperature really drops.

It has a zipper at the neck that not only looks great but also allows you to regulate your temperature. There are two zippered pockets on the front to store your phone, keys, or wallet. Complete the look by wearing it with jeans or a pair of our outdoor pants.



711 SAND



999 BLACK

FEATURES

- Elastic at wrist
- Elastic hem
- Half zip at neck opening
- Two front pockets with zippers

SHELL FABRIC

- ◇ Pile

SHELL1

- ◇ 100% Recycle Polyester

FIT

- ◇ Relaxed

SIZES

- ◇ XS-XXL

ART.NO.

- ◇ 5017645



Tenson Skiwear.

SPRING & SUMMER 2025.



POWERED WITH RDS CERTIFIED DOWN.

ART.NO.
5017717

Prime Down Jacket Men.

Our Prime Down ski jacket is made with lightweight RDS certified down (90/10 down/feather 600 fill power) to keep you warm and comfortable. It comes with a cozy, fixed vertical hoodie to protect yourself against the cold.

The hood, which has a laminated brim, also has adjustable horizontal pulls so that you can tighten it up when it's freezing or windy outside. Elastic adjustable wrist cuffs with velcro straps and adjustable waist hem keeps in the warmth and combined with articulated sleeves it makes for an optimal fit. Comes with inner Lycra® cuffs at sleeve ends and a removable zippered snow skirt to keep the snow out.



964 DARK BLUE



999 BLACK

FEATURES

- Adjustable cuffs
- Adjustable hem
- Adjustable hood
- Articulated sleeves
- Detachable snowgaiter
- Fill Power 600
- Fixed hood
- Fleece lined pockets
- Folded chinguard
- Hem adjustment
- High collar
- Inner lycra cuffs at sleeve ends
- Innerpocket with elastic mesh
- Innerpocket with zip
- Insulation: Duckdown 90/10
- Laminated brim
- One chest pocket with zipper
- RDS certified down
- Ski pass pocket
- Snow skirt: removable with zip
- Two front pockets with zippers
- Water repellent zippers
- Ventilation under arm

SHELL FABRIC

- ◇ Stretch
- ◇ Windproof
- ◇ PFC free waterrepellent finish

SHELL1

- ◇ 100% Polyester

LINING

- ◇ 100% Polyester

PADDING

- ◇ RDS Certified down
90% down
10% feather

FIT

- ◇ Regular

SIZES

- ◇ S-3XL

ART.NO.

- ◇ 5017717

POWERED WITH RDS CERTIFIED DOWN.

ART.NO.
5017716

Prime Down Jacket Wmn.

Our Prime Down ski jacket is made with lightweight RDS certified down (90/10 down/feather 600 fill power) to keep you warm and comfortable. It comes with a cozy, fixed vertical hoodie to protect yourself against the cold.

The hood, which has a laminated brim, also has adjustable horizontal pulls so that you can tighten it up when it's freezing or windy outside. Elastic adjustable wrist cuffs with velcro straps and adjustable waist hem keeps in the warmth and combined with articulated sleeves it makes for an optimal fit. Comes with inner Lycra® cuffs at sleeve ends and a removable zippered snow skirt to keep the snow out.



964 DARK BLUE



999 BLACK

FEATURES

- Adjustable cuffs
- Adjustable hem
- Adjustable hood
- Articulated sleeves
- Detachable snowgaiter
- Fill Power 600
- Fixed hood
- Fleece lined pockets
- Folded chinguard
- Hem adjustment
- High collar
- Inner lycra cuffs at sleeve ends
- Innerpocket with elastic mesh
- Innerpocket with zip
- Insulation: Duckdown 90/10
- Laminated brim
- One chest pocket with zipper
- RDS certified down
- Ski pass pocket
- Snow skirt: removable with zip
- Two front pockets with zippers
- Water repellent zippers
- Ventilation under arm

SHELL FABRIC

- ◇ Stretch
- ◇ Windproof
- ◇ PFC free waterrepellent finish

SHELL1

- ◇ 100% Polyester

LINING

- ◇ 100% Polyester

PADDING

- ◇ RDS Certified down
90% down
10% feather

FIT

- ◇ Regular

SIZES

- ◇ XS-XXL

ART.NO.

- ◇ 5017716

POWERED WITH MPC PLUS™.

ART.NO.
5017086

Core Ski Jacket Men.

A stylish, warm ski jacket that will last for years. Powered with Tenson's proprietary MPC Plus technology, taped seams and water-repellent zippers - making it wind and waterproof with a PFC-free, water-repellent surface.

Given its excellent breathing properties it will let you stay active all day long without feeling too warm. It has sealed seams and a snow skirt to keep snow out. Both the pockets and the collar are fleece-lined for extra warmth and the hood is removable to let you adjust to the weather or change your style. Core MPC Plus Jacket can be combined with the Core MPC Plus Pants for a matching set in the same colours or in different colours for a brighter look.



555 BLUE



680 OLIVE



590 DARK NAVY



999 BLACK

FEATURES

- 120 gr Air-Push Polyester insulation
- Adjustable cuffs
- Adjustable hem
- Adjustable hood vertical and horizontal
- Articulated sleeves
- Detachable hood
- E-dye Polyester lining
- Fleece inside collar
- Fleece lined pockets
- Folded chinguard
- Hem adjustment
- Inner lycra cuffs at sleeve ends
- Innerpocket with zip
- Snow skirt
- Taped seams
- Two zippered chest pockets
- Two zippered front pockets
- Water repellent zippers

SHELL FABRIC

- ◇ MPC Plus
- ◇ WP 8 000 mm
- ◇ MP 8 000 g/m²/24h
- ◇ PFC free waterrepellent finish

SHELL1

- ◇ 33% Recycle Polyester
- ◇ 67% Polyester

LINING

- ◇ 100% Polyester

PADDING

- ◇ 100% Polyester

FIT

- ◇ Regular

SIZES

- ◇ S-4XL

ART.NO.

- ◇ 5017086



POWERED WITH MPC PLUS™.

ART.NO.
5017093

Core Ski Jacket Women.

Core MPC Plus is a classic ski jacket that is carefully designed to be worn for many years. It is powered with Tenson's proprietary MPC Plus technology (WP 8.000mm / MP 8.000 g/m²/24 h) which combines very effective waterproofing with good breathability to keep you comfortable during snowy, windy and wet conditions on the mountain. Features AirPush™ Insulate that provides vapor management while maintaining warmth.

The jacket has fleece on the insides of the collar and the pockets to keep you warm. There are two pockets with zips, a breast pocket with a zip, and an inner pocket with a zip for safe storage. The sleeves, the hood and the hem are adjustable to fit you perfectly and the jacket also has a snow skirt to protect you from the cold and the snow. Combine it with Tenson's Core Pants MPC Plus for a uniform look. Comes with E-dye polyester lining and a PFC free water-repellent finish.



555 BLUE



680 OLIVE



590 DARK NAVY



999 BLACK

FEATURES

- 120 gr Air-Push Polyester insulation
- Adjustable cuffs
- Adjustable hem
- Adjustable hood
- vertical and horizontal
- Articulated sleeves
- Detachable hood
- E-dye Polyester lining
- Fleece inside collar
- Fleece lined pockets
- Folded chinguard
- Hem adjustment
- Inner lycra cuffs at sleeve ends
- Innerpocket with zip
- Snow skirt
- Taped seams
- Two zippered chest pockets
- Two zippered front pockets
- Water repellent zippers



SHELL FABRIC

- ◇ MPC Plus
- ◇ WP 8 000 mm
- ◇ MP 8 000 g/m²/24h
- ◇ PFC free waterrepellent finish

SHELL1

- ◇ 33% Recycle Polyester
- ◇ 67% Polyester

LINING

- ◇ 100% Polyester

PADDING

- ◇ 100% Polyester

FIT

- ◇ Regular

SIZES

- ◇ XS-3XL

ART.NO.

- ◇ 5017093



POWERED WITH MPC PLUS.

ART.NO.
5017099

Core Ski Pants Men.

Core Ski Pants is a pair of flexible ski pants that can be adapted to every activity and occasion. Powered with Tenson's proprietary MPC Plus technology, taped seams and water-repellent zippers - making them wind and waterproof with a PFC-free, water-repellent surface.

Keep the braces on for intense skiing when everything has to stay perfectly in place or remove the braces for calmer days or other outdoor activities. The Core MPC Plus pants also have a variety of practical features to create a pair of ski pants that are both smart-looking and functional. An adjustable waist and pre-bent knees contribute to a better fit. Pockets comes with fleece lining for extra comfort and an extra thigh pocket with a zip. For easy dressing, the trousers have large zips at the ankles, which also have snow gaiters to keep it tight between the pants and ski boots. Taped seams, light padding and waterproof these ski pants will let you stay active all day long without feeling too warm.



999 BLACK

FEATURES

- 80 gr Air-Push Polyester insulation
- Adjustable waist
- Articulated knees
- Detachable suspenders
- E-dye Polyester lining
- Elastic in waist
- Fleece lined pockets
- Lockable zipper
- One leg pocket with zipper
- Reinforcement
- Secure double closure with button and hook
- Snowgaiter
- Taped seams
- Two front pockets with zippers
- Zip in leg ending



SHELL FABRIC

- ◇ MPC Plus
- ◇ WP 8 000 mm
- ◇ MP 8 000 g/m²/24h
- ◇ PFC free waterrepellent finish

SHELL1

- ◇ 33% Recycle Polyester
- ◇ 67% Polyester

LINING

- ◇ 100% Polyester

PADDING

- ◇ 100% Polyester

FIT

- ◇ Regular

SIZES

- ◇ S-3XL

ART.NO.

- ◇ 5017099



POWERED WITH MPC PLUS.

ART.NO.
5017103

Core Ski Pants Women.

Core Ski Pants is a pair of flexible ski pants that can be adapted to every activity and occasion. Powered with Tenson's proprietary MPC Plus technology, taped seams and water-repellent zippers - making them wind and waterproof with a PFC-free, water-repellent surface.

Keep the braces on for intense skiing when everything has to stay perfectly in place or remove the braces for calmer days or other outdoor activities. The Core MPC Plus pants also have a variety of practical features to create a pair of ski pants that are both smart-looking and functional. An adjustable waist and pre-bent knees contribute to a better fit. Pockets comes with fleece lining for extra comfort and an extra thigh pocket with a zip. For easy dressing, the trousers have large zips at the ankles, which also have snow gaiters to keep it tight between the pants and ski boots. Taped seams, light padding and waterproof these ski pants will let you stay active all day long without feeling too warm.



999 BLACK

FEATURES

- 80 gr Air-Push Polyester insulation
- Adjustable waist
- Articulated knees
- Detachable suspenders
- E-dye Polyester lining
- Elastic in waist
- Fleece lined pockets
- Lockable zipper
- One leg pocket with zipper
- Secure double closure with button and hook
- Snowgaiter
- Taped seams
- Reinforcement
- Two front pockets with zippers
- Zip in leg endin



SHELL FABRIC

- ◇ MPC Plus
- ◇ WP 8 000 mm
- ◇ MP 8 000 g/m2/24h
- ◇ PFC free waterrepellent finish

SHELL1

- ◇ 33% Recycle Polyester
- ◇ 67% Polyester

LINING

- ◇ 100% Polyester

PADDING

- ◇ 100% Polyester

FIT

- ◇ Regular

SIZES

- ◇ XS-XXL

ART.NO.

- ◇ 5017103



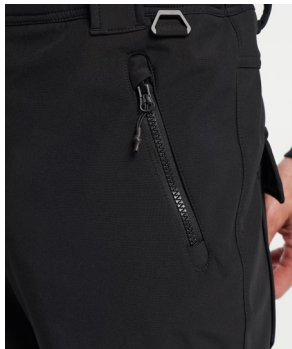
WIND & WATER RESISTANT.

ART.NO.
5017659

Cygnus Softshell Pants Men.

Our Cygnus softshell pants are wind and water resistant and extremely breathable. They are quick-drying and made with four-way stretch to enable free movement.

They have good reinforcement and have an adjustable waist and ankles to ensure a perfect fit. The Cygnus softshell pants have zips at the ankles to fit over shoes and ski boots.



999 BLACK

FEATURES

- Snowgaiter with silicone
- Two front pockets with zippers
- Adjustable waist
- Articulated knees
- Detachable suspenders
- Elastic in waist
- Lockable zipper
- Reinforcement
- Zip in leg ending

SHELL FABRIC

- ◇ Softshell
- ◇ WP 10 000 mm
- ◇ MP 5 000 g/m²/24h
- ◇ PFC-free waterrepellent finish

SHELL1

- ◇ 88% Polyester
- 12% Spandex

FIT

- ◇ Slim

SIZES

- ◇ S-3XL

ART.NO.

- ◇ 5017659

WIND & WATER RESISTANT.

ART.NO.
5017720

Grace Softshell Ski Pants Wmn.

Ski chique – our Grace Softshell Ski Pants provide an elegant stylish silhouette that follows your curves perfectly.

A slim-fit pair with an elastic waist and a comfortable feeling made possible by the freedom of movement that the water-repellent and wind-proof softshell fabric provides. Features two zippered front pockets, zippered hems, padded knees, snow gaiter inside leg hem and water-repellent zippers.



999 BLACK

FEATURES

- Adjustable waist with hidden elastic
- Articulated knees
- Lockable zipper
- Padded knee panel
- Reinforcement
- Secure double closure with button and hook
- Silicone gripper at leg opening
- Snowgaiter inside leg hem
- Two front pockets with zippers
- Water repellent zippers
- Zip in leg ending

SHELL FABRIC

- ◇ Softshell
- ◇ WP 10 000 mm
- ◇ MP 5 000 g/m²/24h
- ◇ PFC-free waterrepellent finish

SHELL1

- ◇ 88% Polyester
12% Spandex

FIT

- ◇ Slim

SIZES

- ◇ SX-XXL

ART.NO.

- ◇ 5017720

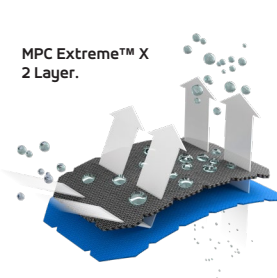


NEW ADDED
MPC LEVELS!

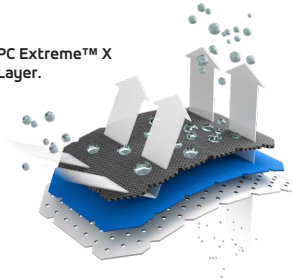
TENSON TECHNOLOGIES.

We've got your back!

MPC Extreme™ X
2 Layer.



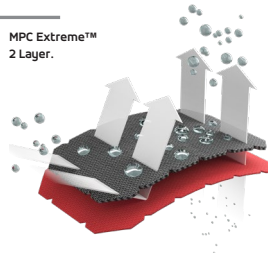
MPC Extreme™ X
3 Layer.



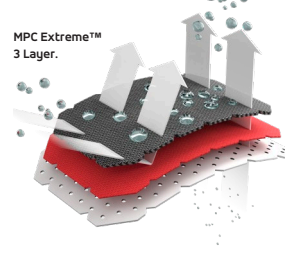
MPC Extreme X™ - our brand new MPC™ level is our highest grade - combines extremely effective waterproof properties with exceptional breathing performance. Guaranteed waterproofness of at least 20.000mm.

MPC Extreme™ - our second highest grade - combines extremely effective waterproof properties with exceptional breathing performance. Guaranteed waterproofness of at least 10.000mm.

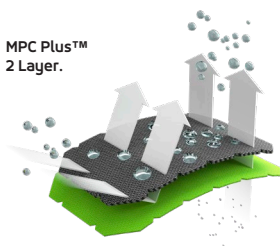
MPC Extreme™
2 Layer.



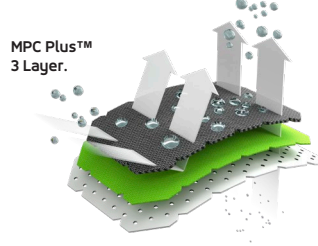
MPC Extreme™
3 Layer.



MPC Plus™
2 Layer.



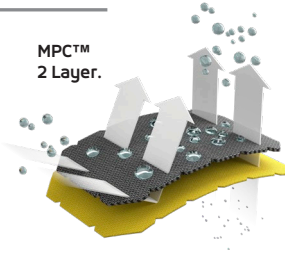
MPC Plus™
3 Layer.



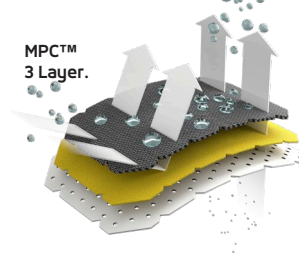
MPC Plus™ combines very effective waterproof properties with effective breathability properties suitable for everyday, active outdoors lifestyles. Guaranteed waterproofness of at least 8.000mm.

MPC™ combines effective waterproof properties with a good breathing performance, making Tenson garments featuring MPC™ suitable for everyday active lifestyles. Guaranteed waterproofness of at least 5.000mm.

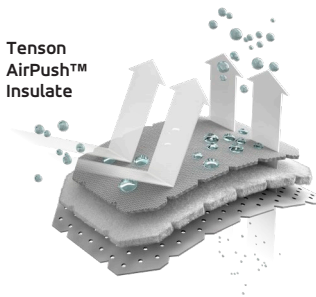
MPC™
2 Layer.



MPC™
3 Layer.



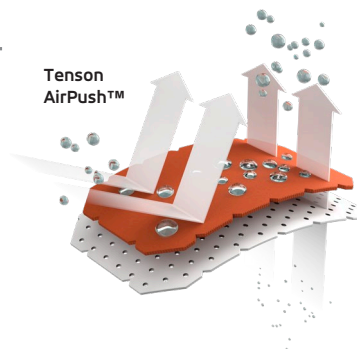
Tenson
AirPush™
Insulate



Tenson's AirPush™ Insulate offers lightweight, voluminous insulation for cold-weather conditions. The featherless padding is designed to provide excellent breathability, moisture transport and movement making it ideal for the super-active outdoor adventure traveler.

Tenson AirPush™ is a lightweight microfibre technology focused on improving breathability, suitable for strenuous activities which require maximum comfort and breathability along with wind and water resistance. Made possible by the high density of the fabric (+30% higher than conventional fabrics).

Tenson
AirPush™



TENSON TECHNOLOGIES.

Waterproof. Windproof. Breathable. = MPC™.

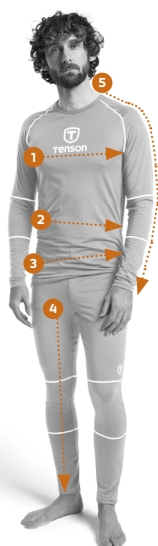
We've got your back in terms of function and laminate! We've been on a quest to withstand wind and water since the early 1980s when we at Tenson launched our self-developed MPC (Moisture Permeability Coating) laminate that keeps you dry and comfortable.

Tenson's MPC technology: developed to withstand wind and water since the early 1980's keeping you dry and comfortable no matter what weather mother nature might throw at you.

The MPC laminate causes the rainwater to drain off the garment. At the same time, the condensation / moisture that comes from the body is transported into and through the garment. In other words, MPC allows the garment to "breathe" so it feels comfortable to wear even during demanding activity. Our MPC garments also are taped at seams to add additional wind- and waterproof protection. Tenson MPC features four performance grades - MPC Extreme X™, MPC Extreme™, MPC Plus and MPC.



Sizeguide.

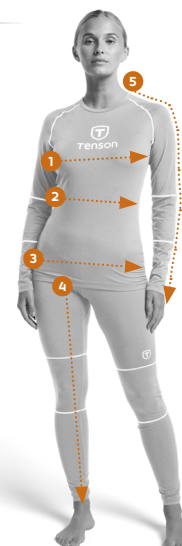


Men

	S	M	L	XL	XXL	3XL
1. Chest	92-96	98-102	104-108	110-114	116-120	124-128
2. Waist	80-84	86-90	92-96	98-102	104-108	112-116
3. Seat	94-98	100-104	106-110	112-116	118-122	126-130
4. Inseam	82	83	84	85	86	87
5. Sleeve length, from neck	78	80	82	84	86	88

Women

	XS	S	M	L	XL	XXL
1. Chest	78-82	84-88	90-94	98-102	106-110	112-116
2. Waist	62-66	68-72	74-78	82-86	90-94	96-100
3. Seat	87-101	93-97	99-103	107-111	115-119	121-125
4. Inseam	77	78	79	80	81	82
5. Sleeve length, from neck	72	73.5	75	76.5	77	78.5



Overview - Outdoor Collection – Men.



988 ANTRACITHE

Himalaya Shell MPC Extreme X™ Jkt Men.

SIZES

◇ S-3XL

ART.NO.

◇ 5018146



964 DARK BLUE



999 BLACK

TXlite™ Shell Jacket Men.

SIZES

◇ S-4XL

ART.NO.

◇ 5018100



964 DARK BLUE



999 BLACK

TXlite™ Softshell Jacket Men.

SIZES

◇ S-4XL

ART.NO.

◇ 5018098



999 BLACK



964 DARK BLUE



648 GREY GREEN

TXlite™ Shibui Down Jacket Men.

SIZES

◇ S-3XL

ART.NO.

◇ 5017961



648 GREY GREEN



964 DARK BLUE



999 BLACK

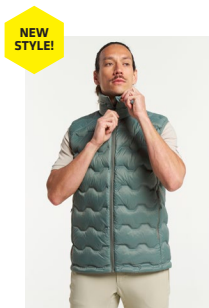
TXlite™ Shibui Down Collar Jacket Men.

SIZES

◇ S-3XL

ART.NO.

◇ 5018082



648 GREY GREEN



964 DARK BLUE



999 BLACK

TXlite™ Shibui Down Vest Men.

SIZES

◇ S-3XL

ART.NO.

◇ 5018084



812 BEIGE



964 DARK BLUE



999 BLACK

Himalaya Full Zip Pocket Men.

SIZES

◇ S-3XL

ART.NO.

◇ 5018221

Overview - Outdoor Collection – Women.



988 ANTRACITHE

Himalaya Shell MPC Extreme X™ Jkt Women.

SIZES

- ◇ XS-XXL

ART.NO.

- ◇ 5018145



964 DARK BLUE



999 BLACK

TXlite™Shell Jacket Women.

SIZES

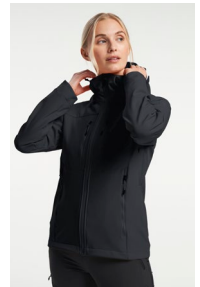
- ◇ XS-XXL

ART.NO.

- ◇ 5018099



964 DARK BLUE



999 BLACK

TXlite™Softshell Jacket Women.

SIZES

- ◇ XS-XXL

ART.NO.

- ◇ 5018097



648 GREY GREEN



964 DARK BLUE



999 BLACK

TXlite™Shibui Down Jacket Women.

SIZES

- ◇ XS-XXL

ART.NO.

- ◇ 5017960



648 GREY GREEN



964 DARK BLUE



999 BLACK

TXlite™Shibui Down Collar Jacket Women.

SIZES

- ◇ XS-XXL

ART.NO.

- ◇ 5018081



648 GREY GREEN



964 DARK BLUE



999 BLACK

TXlite™Shibui Down Vest Women.

SIZES

- ◇ S-3XL

ART.NO.

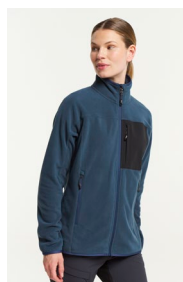
- ◇ 5018083

PRICE

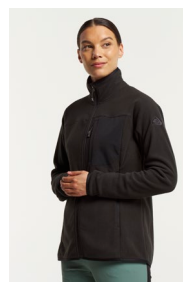
- ◇ INKL MOMS SEK 1.500
- ◇ EXKL MOMS SEK 1.200



812 BEIGE



964 DARK BLUE



999 BLACK

Himalaya Full Zip Pocket Women.

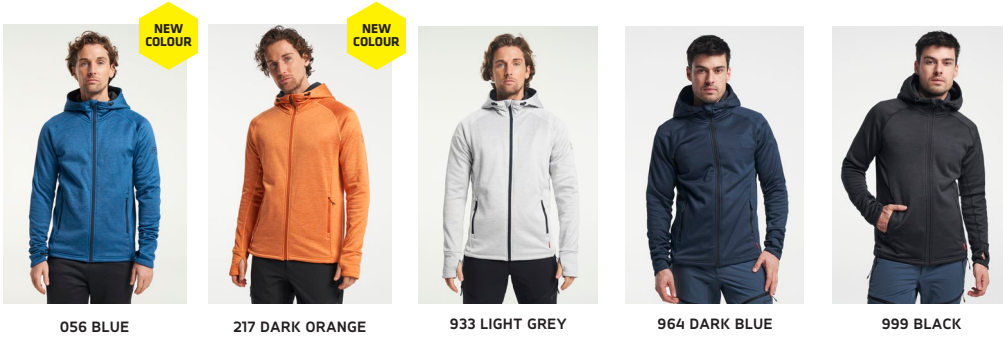
SIZES

- ◇ XS-XXL

ART.NO.

- ◇ 5018220

Overview - Outdoor Collection – Men.



TXlite™ Midlayer Hoodie Men.

SIZES

◇ S-4XL

ART.NO.

◇ 5017043



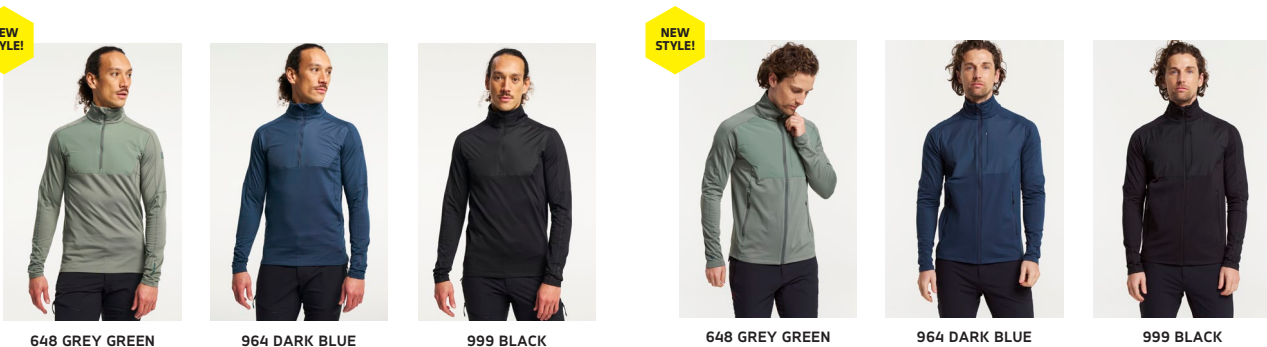
TXlite™ Midlayer Zip Men.

SIZES

◇ S-4XL

ART.NO.

◇ 5017401



TXlite™ Windbloc Full Zip Men.

SIZES

◇ S-3XL

ART.NO.

◇ 5018116

TXlite™ Windbloc Full Zip Men.

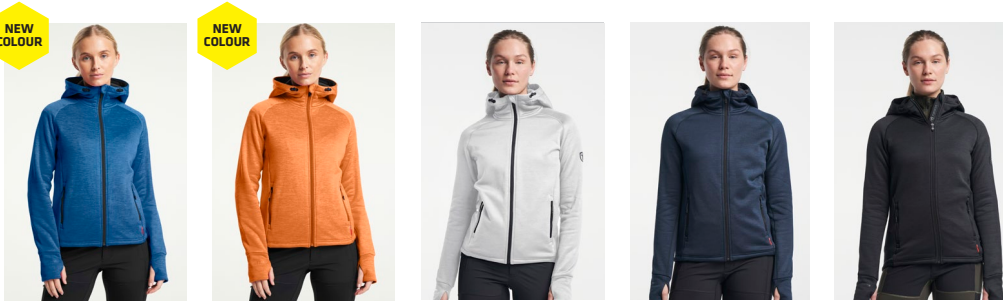
SIZES

◇ S-3XL

ART.NO.

◇ 5018114

Overview - Outdoor Collection – Women.



056 BLUE

217 DARK ORANGE

933 LIGHT GREY

964 DARK BLUE

999 BLACK

TXlite™ Midlayer Hoodie Women.

SIZES

◇ XS-XXL

ART.NO.

◇ 5017402



056 BLUE

217 DARK ORANGE

933 LIGHT GREY

964 DARK BLUE

999 BLACK

TXlite™ Midlayer Zip Women.

SIZES

◇ XS-XXL

ART.NO.

◇ 5017400



648 GREY GREEN

964 DARK BLUE

999 BLACK

648 GREY GREEN

964 DARK BLUE

999 BLACK

TXlite™ Windbloc Full Zip Women.

SIZES

◇ XS-XXL

ART.NO.

◇ 5018115

TXlite™ Windbloc Full Zip Women.

SIZES

◇ XS-XXL

ART.NO.

◇ 5018113

Overview - Outdoor Collection – Men.



999 BLACK



964 DARK BLUE



999 BLACK



964 DARK BLUE

TXlite™ Hybrid Zip Men.

SIZES

◇ S-4XL

ART.NO.

◇ 5018068

TXlite™ Hybrid Vest Men.

SIZES

◇ S-4XL

ART.NO.

◇ 5018059

NEW
STYLE!



001 WHITE



056 BLUE



653 GREY GREEN



711 SAND



964 DARK BLUE



999 BLACK

TXlite™ Tri-Blend Polo Men.

SIZES

◇ S-4XL

ART.NO.

◇ 5018211



001 WHITE



590 DARK NAVY



999 BLACK



653 GREY GREEN



590 DARK NAVY



999 BLACK

TXlite™ Q-Dry Polo Men.

SIZES

◇ S-4XL

ART.NO.

◇ 5018062

TXlite™ Melange Polo Men.

SIZES

◇ S-4XL

ART.NO.

◇ 5018060

Overview - Outdoor Collection – Women.



999 BLACK



964 DARK BLUE



999 BLACK



964 DARK BLUE

TXlite™ Hybrid Zip Wmn.

SIZES

◇ XS-XXL

ART.NO.

◇ 5018067

TXlite™ Hybrid Vest Wmn.

SIZES

◇ XS-XXL

ART.NO.

◇ 5018045

NEW
STYLE!



001 WHITE



056 BLUE



653 GREY GREEN



711 SAND



964 DARK BLUE



999 BLACK

TXlite™ Tri-Blend Polo Women.

SIZES

◇ XS-XXL

ART.NO.

◇ 5018217



001 WHITE



590 DARK NAVY



999 BLACK



653 GREY GREEN



590 DARK NAVY



999 BLACK

TXlite™ Q-Dry Polo Women.

SIZES

◇ XS-XXL

ART.NO.

◇ 5018078

TXlite™ Melange Polo Women.

SIZES

◇ XS-XXL

ART.NO.

◇ 5018061

Overview - Outdoor Collection – Men.



685 DARK OLIVE



964 DARK BLUE



999 BLACK

TXlite™ Flex Pants Men.

SIZES

◇ S-3XL

ART.NO.

◇ 5018064



685 DARK OLIVE



964 DARK BLUE



999 BLACK

TXlite™ Flex Shorts Men.

SIZES

◇ S-3XL

ART.NO.

◇ 5018066



999 BLACK

TXlite™ Adventure Pants Men.

SIZES

◇ S-3XL

ART.NO.

◇ 5018048



Overview - Outdoor Collection – Women.



685 DARK OLIVE



964 DARK BLUE



999 BLACK

TXlite™ Flex Pants Women.

SIZES

◇ XS-XXL

ART.NO.

◇ 5018063



964 DARK BLUE



685 DARK OLIVE



999 BLACK

TXlite™ Flex Shorts Women.

SIZES

◇ XS-XXL

ART.NO.

◇ 5018065



999 BLACK

TXlite™ Adventure Pants Women.

SIZES

◇ XS-XXL

ART.NO.

◇ 5018047

Overview - Lifestyle Collection – Men.



964 DARK BLUE



999 BLACK

Vision Parka Men.

SIZES

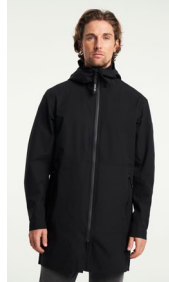
- ◇ S-3XL

ART.NO.

- ◇ 5017178



964 DARK BLUE



999 BLACK

Dew Point Parka Men.

SIZES

- ◇ S-3XL

ART.NO.

- ◇ 5017908



999 BLACK



964 DARK BLUE



649 OLIVE



999 BLACK



649 OLIVE



Apelviken PU Coat Men.

SIZES

- ◇ S-4XL

ART.NO.

- ◇ 5017644

Apelviken PU Hat Unisex.

SIZES

- ◇ S/M, L/XL

ART.NO.

- ◇ 5018253



711 SAND



999 BLACK



999 BLACK



711 SAND

Yoke Full Zip Men.

SIZES

- ◇ S-3XL

ART.NO.

- ◇ 5017896

Yoke Half Zip Men.

SIZES

- ◇ S-3XL

ART.NO.

- ◇ 5017646

Overview - Lifestyle Collection – Women.



964 DARK BLUE



999 BLACK



964 DARK BLUE



999 BLACK

Vision Parka Women.

SIZES

- ◇ XS-XXL

ART.NO.

- ◇ 5018187

Misty Parka Women.

SIZES

- ◇ XS-XXL

ART.NO.

- ◇ 5017779



999 BLACK



649 OLIVE



964 DARK BLUE



999 BLACK



649 OLIVE



Apelviken PU Coat Women.

SIZES

- ◇ XS-XXL

ART.NO.

- ◇ 5017643

Apelviken PU Hat Unisex.

SIZES

- ◇ S/M, L/XL

ART.NO.

- ◇ 5018253



711 SAND



999 BLACK



711 SAND



999 BLACK

Yoke Full Zip Women.

SIZES

- ◇ XS-XXL

ART.NO.

- ◇ 5017895

Yoke Half Zip Women.

SIZES

- ◇ XS-XXL

ART.NO.

- ◇ 5017645

TENSON SERVICE COMMITMENT. LONG-LIFE. ON STOCK.

Overview - Ski Collection – Men.



964 DARK BLUE



999 BLACK

Prime Down Jacket Men.

SIZES

◇ S-3XL

ART.NO.

◇ 5017717



555 BLUE



680 OLIVE



590 DARK NAVY



999 BLACK

Core Ski Jacket Men.

SIZES

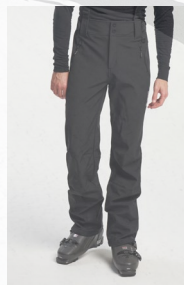
◇ S-4XL

ART.NO.

◇ 5017086



999 BLACK



999 BLACK

Core Ski Pants Men.

SIZES

◇ S-3XL

ART.NO.

◇ 5017099

Cygnus Softshell Ski Pants Men.

SIZES

◇ S-3XL

ART.NO.

◇ 5017659

TENSON SERVICE COMMITMENT. LONG-LIFE. ON STOCK.

Overview - Ski Collection – Women.



964 DARK BLUE

999 BLACK

Prime Down Jacket Women.

SIZES

◇ XS-XXL

ART.NO.

◇ 5017716



555 BLUE

680 OLIVE

590 NAVY

999 BLACK

Core Ski Jacket Women.

SIZES

◇ XS-XXL

ART.NO.

◇ 5017093



999 BLACK

Core Ski Pants Women.

SIZES

◇ XS-XXL

ART.NO.

◇ 5017103



999 BLACK

Grace Softshell Ski Pants Women.

SIZES

◇ XS-XL

ART.NO.

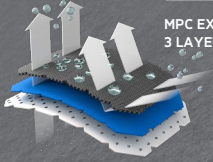
◇ 5017720





Tenson®
EST. 1951

NEW MPC TECHNOLOGY!



MPC EXTREME X™
3 LAYER.

The Swedish Outdoor Brand.

Tenson Product & Design Dpt. / Campaign Imaging Robert Elmegård, Superstudio / Studio Imaging Stefan Sjogren, Superstudio



Tenson®
EST. 1951